

NOW LEASING WATERSTONE APARTMENTS



9600 19th St.
Alta Loma, CA 91737

AMENITIES

- Resort-style swimming pool and spa
- State-of-the-art barbecue grills and playground
- Executive business center/lounge
- 24hr modern fitness center
- Basketball and tennis court
- Professional management
- Assigned parking and ample parking onsite
- 24-hr maintenance call center
- Online rent payments and service work orders
- Pet-friendly (cats and small dogs)

Located in a perfect area of Alta Loma, you'll have beautiful nature settings right outside your very doorsteps...in case you feel like taking a hike or a brisk walk at the many parks nearby...while enjoying the urban lifestyle just blocks away, with fun entertainment, tasty eateries and fine shopping at your choosing. Living at Waterstone Alta Loma means being able to easily access all parts of the city... Upland, Fontana, Ontario, Rialto, Pomona and San Dimas, all via the 210, 15 and 10 freeways nearby...or hop onto the Upland Commuter Rail or the Rancho Cucamonga Commuter Rail...or take a flight at the Ontario International Airport. Come on by and start this journey with us...

FEATURES

- Full stainless-steel appliance package
- Granite countertops
- Designer cabinetry
- Stackable washer and dryer
- Ample closet space and storage
- Stylish mosaic tile backsplash
- Wood-inspired flooring
- Plush carpeting
- Extremely oversize decks and patios
- Central air conditioning and heating
- Designer lighting and fixture package
- Stunning mountain views in selected apartment homes



FUSION

PROPERTY MANAGEMENT

FusionPMC.com

CONTACT TODAY FOR A PERSONAL TOUR!

888.345.0319

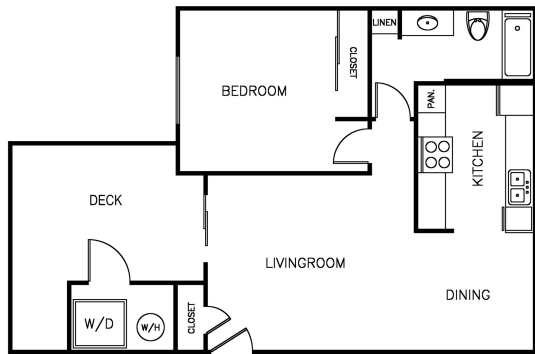
AltaLoma@FusionPMC.com | WaterstoneAltaLomaApts.com



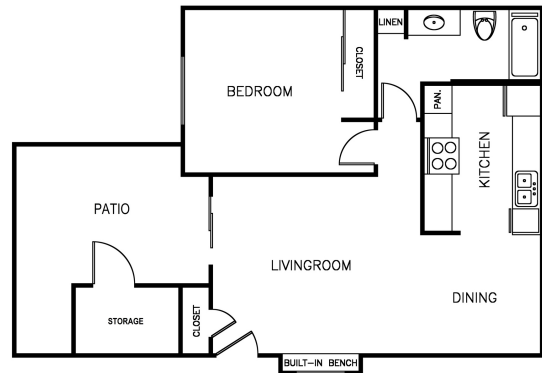
WATERSTONE ALTA LOMA

9600 19th St.
Alta Loma, CA 91737

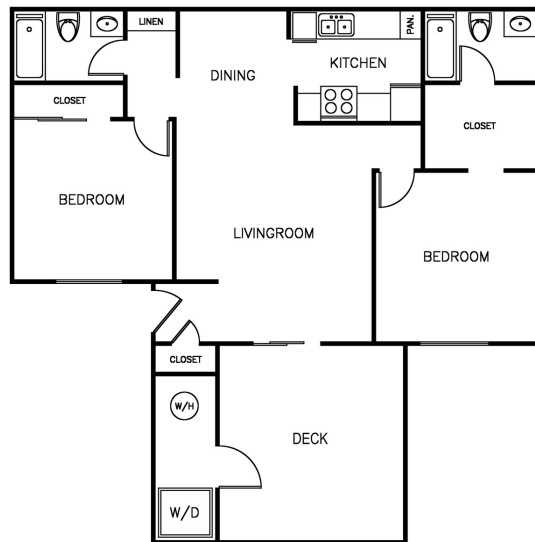
888.345.0319 | AltaLoma@FusionPMC.com | WaterstoneAltaLomaApts.com



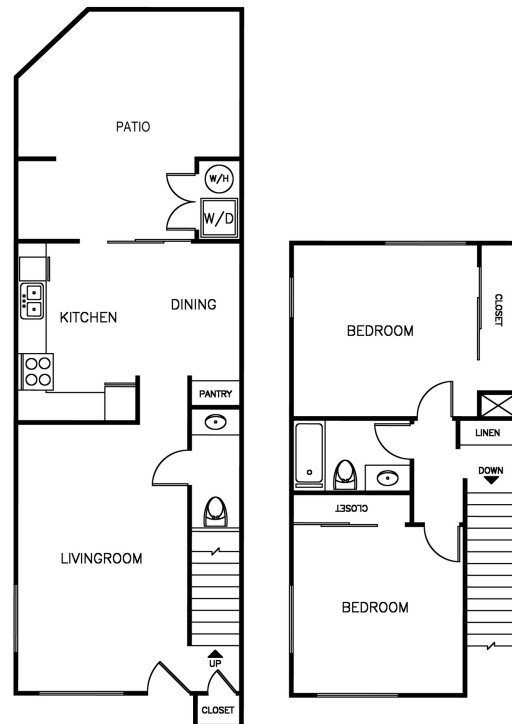
1BEDROOM / 1BATHROOM
Approx. Sqft: 637



1BEDROOM / 1BATHROOM - VILLA
Approx. Sqft: 638
(2-car shared garage and driveway parking available)



2BEDROOM / 2BATHROOM
Approx. Sqft: 889



2BEDROOM / 1.5BATHROOM TOWNHOME
Approx. Sqft: 1,024